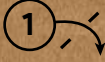


The menu can be folded into a pocket square.
Follow the numbers to fold it into one!



NJ GROUP



Online
Community

EST. 1997



CALI

BY NJ GROUP

RED WINE _____ **Glass** **Bottle**

| | | |
|--|----|----|
| Pierre Jean Merlot | 8 | 38 |
| <i>French</i> | | |
| DB Family Selection Cabernet Sauvignon | 48 | |
| <i>Australia</i> | | |
| Valdubon Roble | 52 | |
| <i>Spain</i> | | |
| Lawson's Dry Hill Pinot Noir | 58 | |
| <i>New Zealand</i> | | |
| Gramercy Lower East Syrah | 88 | |
| <i>USA</i> | | |
| The Pairing Red Blend | 98 | |
| <i>USA</i> | | |

WHITE WINE _____

| | | |
|-------------------------------------|----|----|
| Pierre Jean Chardonnay | 8 | 38 |
| <i>French</i> | | |
| DB Family Selection Sauvignon Blanc | 48 | |
| <i>Australia</i> | | |
| Lawson's Dry Hill Sauvignon Blanc | 52 | |
| <i>New Zealand</i> | | |
| Marques De Caceres Verdejo | 58 | |
| <i>Spain</i> | | |
| The Pairing Chardonnay | 98 | |
| <i>USA</i> | | |

SPARKLING WINE _____

| | | |
|----------------------------|----|--|
| Santa Margherita, Prosecco | 38 | |
|----------------------------|----|--|

All Prices are subjected to 10% service charges and prevailing goods and services tax.

CANNED DRINKS _____

| | |
|-------------|---|
| Coca Cola | 4 |
| Coke Light | 4 |
| Coke Zero | 4 |
| Sprite | 4 |
| Soda Water | 4 |
| Orangina | 4 |
| Root Beer | 4 |
| Ginger Ale | 4 |
| Tonic Water | 4 |

WATER BOTTLE _____

| | |
|-----------------|---|
| Mineral Water | 4 |
| Sparkling Water | 4 |

COFFEE _____ **Hot** **Cold**

| | | |
|-----------------|---|---|
| Black Coffee | 4 | 6 |
| Espresso | 4 | - |
| Cappuccino | 4 | 6 |
| Café Latte | 4 | 6 |
| Caffe Mocha | 6 | 6 |
| Hazelnut Latte | 6 | 6 |
| Vanilla Latte | 6 | 6 |
| Macadamia Latte | 6 | 6 |
| Chocolate | 6 | 6 |

TEA _____

| | |
|--------------------|---|
| English Breakfast | 6 |
| Earl Grey | 6 |
| Ginger Lemon Grass | 6 |
| Jasmine Green | 6 |
| Ice Lemon | 6 |



Everything Easy For Everyone Everyday

SINGLE MALT 30ml Bottle

| | | |
|--------------------|----|-----|
| Glenfiddich 14 yrs | 14 | 220 |
| Glenfiddich 12 yrs | 12 | 210 |
| Glenlivet 12 yrs | 12 | 210 |
| Macallan 10 yrs | 12 | 198 |
| Glenfiddich 10 yrs | 10 | 180 |

AMERICAN WHISKEY

| | | |
|---------------|----|-----|
| Maker's Mark | 10 | 158 |
| Jack Daniel's | 10 | 158 |

SCOTCH WHISKY

| | | |
|---------------------|----|-----|
| Black Label | 10 | 148 |
| Chivas Regal 12 yrs | 10 | 148 |

VODKA

| | | |
|------------------|----|-----|
| Grey Goose Vodka | 10 | 138 |
| Absolut Vodka | 10 | 118 |

TEQUILA

| | | |
|-------------|----|-----|
| Jose Cuervo | 10 | 118 |
|-------------|----|-----|

GIN

| | | |
|-----------------|----|-----|
| Bombay Sapphire | 10 | 138 |
| Hendricks | 10 | 138 |

RUM

| | | |
|----------------|----|-----|
| Bacardi White | 10 | 118 |
| Captain Morgan | 10 | 118 |

COGNAC

| | | |
|---------------|----|-----|
| Hennessy Vsop | 12 | 188 |
|---------------|----|-----|

DRAUGHT BEER

| | | |
|----------------------|----|----|
| Tiger | 12 | 18 |
| Little Creatures IPA | 14 | 22 |

BOTTLED BEER Bottle

| | |
|---------------------------|----|
| Tiger (5%) | 10 |
| Heineken (5%) | 10 |
| Corona (4.6%) | 10 |
| Erdinger Weissbier (5.3%) | 12 |

COCKTAIL

| | |
|-----------------|----|
| Long Island Tea | 14 |
| Cosmopolitan | 14 |
| Singapore Sling | 14 |
| Cali's Paradise | 14 |

FRESH JUICE

| | |
|------------|---|
| Apple | 6 |
| Watermelon | 6 |
| Orange | 6 |

SMOOTHIE

| | |
|------------|---|
| Banana | 6 |
| Strawberry | 6 |
| Mango | 6 |
| Peach | 6 |

CALI BOOSTER

| | |
|-------------------------|---|
| Beeter Sweet Symphony | 8 |
| 24 Carrot Magic | 8 |
| Cucum on the Lemon Tree | 8 |