

TO START

Edamame

Salted steamed soybeans in the pod

20

Kimchi

Korean spicy fermented vegetables

25

Miso Soup

Fermented soybean paste with seafood broth, tofu and seaweed

28

Assorted Mushroom Butter Shoyu

Grilled shimeji, shitake and champignon mushroom in garlic butter

48

Pork Gyoza

Pan-fried pork and vegetables dumplings

65

NEW Salmon Mentai Pizza

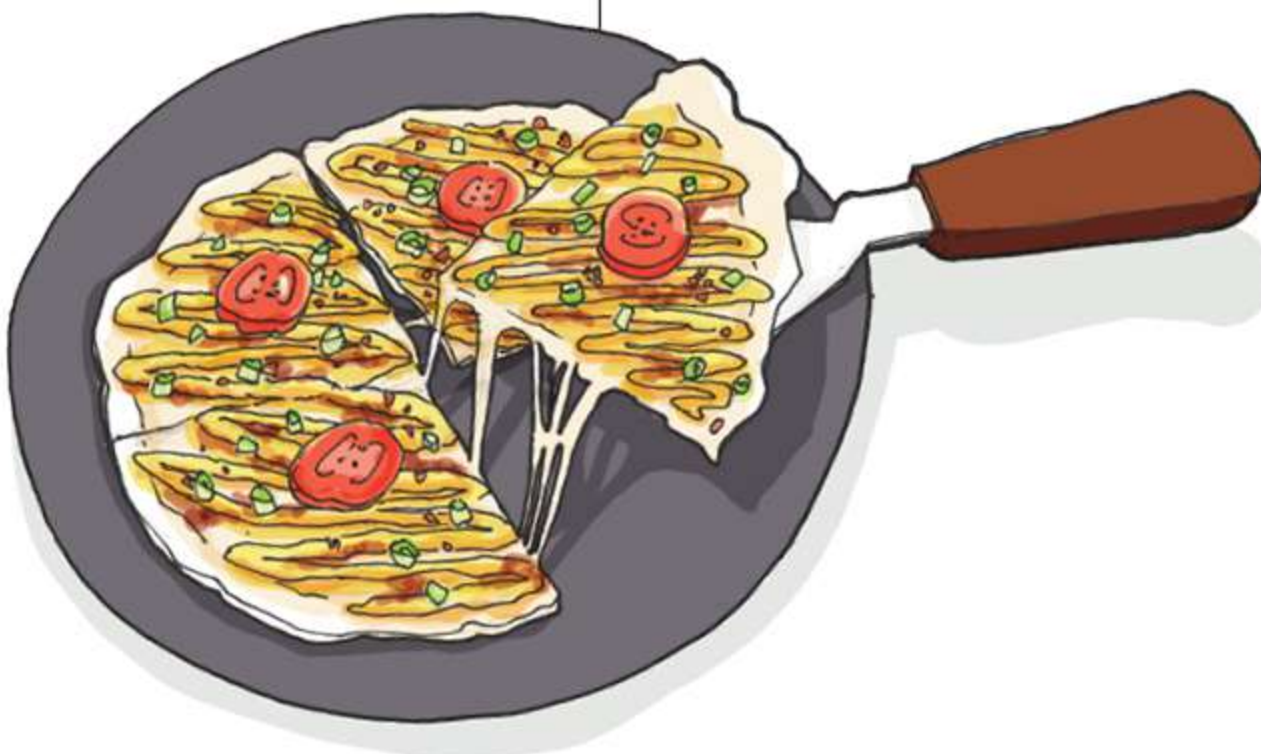
Savoury crepes with salmon, potato, melted mozzarella cheese with seared miso garlic cream and tobiko

68

Mentaiko Pizza

Savoury crepes with shrimp, mentaiko, potato and melted mozzarella cheese

78





SALADS

Pork Harusame Salad 60
Steamed pork belly slices, vermicelli, mixed salad with sesame dressing

Japanese Mushroom Salad 65
Grilled shimeji, shitake and champignon mushroom with salad and vegetable dressing

Crunchy Potato Salad 70
Crispy potato strings, salad, bacon, grilled veggies and 63°C soft boiled egg



CHICKEN

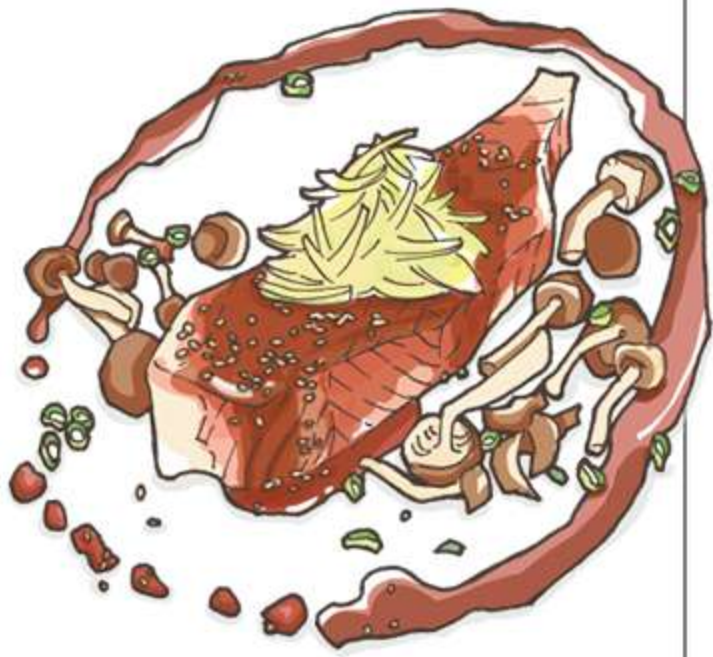
Chicken Teriyaki 69
Grilled chicken teriyaki with mixed salad and basil pesto dressing

Chicken Nanban 69
Sweet and sour marinated chicken with Japanese tartare sauce and basil pesto dressing

Chilli Cheese Chicken 69
Teppan grilled with spicy Korean sauce, onion-capsicum mix and melted mozzarella cheese

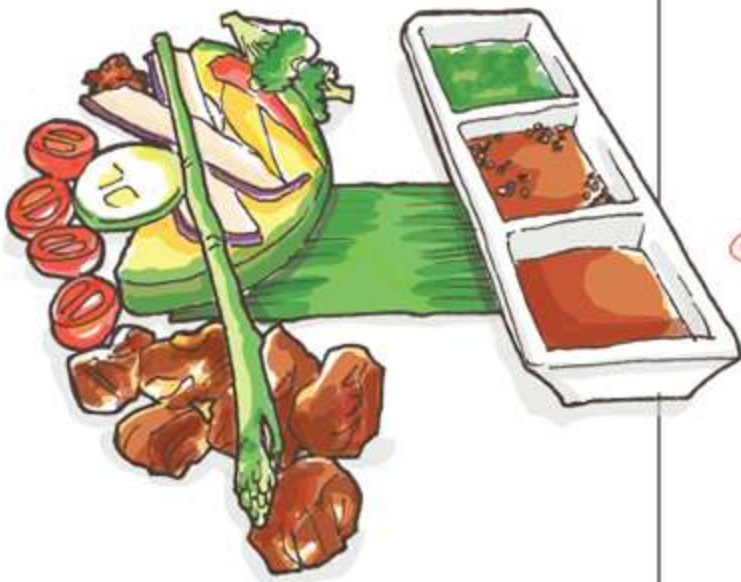
NOTICE

- Prices are in thousand rupiahs
- Prices are subject to 16% government tax & service charge
- Rp. 200.000 corkage charge for outside alcohol & liquor
- Rp. 100.000 corkage charge for wines/bottle from outside
- Pets are not allowed
- No outside foods/drinks
- Breakage caused by customers are to be compensated
- Please take good care of your child



SEAFOOD

- | | |
|---|------------|
| Gindara Misozuke | 80 |
| <i>Grilled gindara served with assorted vegetables</i> | |
| Prawn Broccoli Mayo | 138 |
| <i>Grilled prawns and broccoli with creamy mayo-ponzu</i> | |
| Salmon Teriyaki | 160 |
| <i>Grilled salmon served with grilled mixed mushrooms</i> | |
| Scallop Broccoli Motoyaki | 165 |
| <i>Grilled scallops and broccoli with creamy mayo-ponzu</i> | |



BEEF

- | | |
|--|------------|
| Beef Yakiniku | 110 |
| <i>Teppan grilled beef slices with with onion-capsicum mix with sweet yakiniku sauce</i> | |
| NEW Creamy Garlic Beef | 115 |
| <i>Teppan grilled beef slices with onion-mushroom mix and creamy garlic sauce</i> | |
| Gyutan Pirikara Negi Shio | 115 |
| <i>Teppan grilled ox-tongue with spicy garlic shoyu</i> | |
| Meltique Steak | 268 |
| <i>200gr diced Meltique beef steak served with assorted vegetables and trio sauce</i> | |



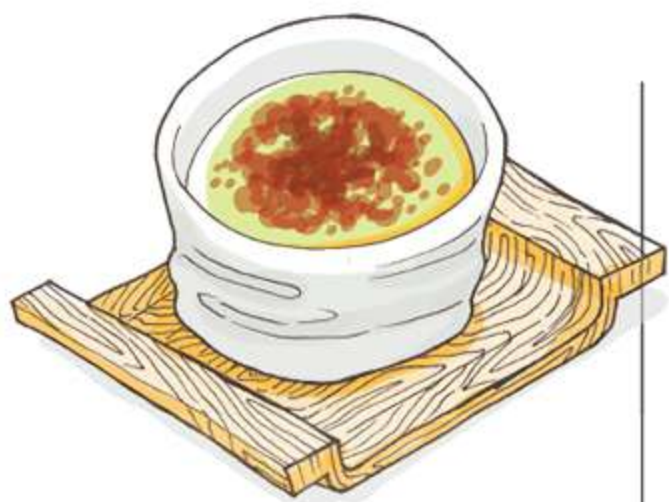
PORK

- | | |
|--|------------|
| Buta Syogayaki | 78 |
| <i>Grilled sliced pork belly with onion-capsicum mix and ginger sauce</i> | |
| Spicy Pork Kimchi | 88 |
| <i>Grilled sliced pork belly with spicy Korean kimchi</i> | |
| Truffle Mushroom Pork Chop | 165 |
| <i>Grilled pork chop with creamy truffle mushroom, mixed salad, chili oil and balsamic reduction</i> | |



RICE DISHES

- | | |
|--|--------------|
| Garlic Rice (Small/Large) | 30/48 |
| <i>Teppan fried rice with garlic chips and butter shoyu</i> | |
| Gyutan Fried Rice | 50 |
| <i>Ox-tongue fried rice with garlic chips</i> | |
| Salmon Chahan (Normal/Spicy) | 55 |
| <i>Teppan grilled salmon fried rice</i> | |
| Kimchi Rice Gyutan Don | 150 |
| <i>Kimchi fried rice with grilled ox tongue served in hot stone bowl</i> | |
| NEW Salmon Mentai Don | 165 |
| <i>Seared salmon on salmon fried rice with miso garlic cream and tobiko</i> | |
| Beef Truffle Don | 175 |
| <i>Meltique beef slices with black truffle oil & 63°C soft boiled egg served in hot stone bowl</i> | |



DESSERTS

- | | |
|--|-----------|
| Macha Crème Brûlée | 50 |
| <i>Green tea crême brûlée</i> | |
| Macha Ogura Shiratama | 50 |
| <i>Green tea ice cream with mochi balls and red bean paste</i> | |
| Berry Cheese Cake | 50 |
| <i>Cheese cake with cookie crumble and mixed berries sauce served on a martini glass</i> | |
| Matcha Tiramisu | 60 |
| <i>Matcha tiramisu served with mixed sesame tuille</i> | |
| Japanese Chocolate Lava Cake | 60 |
| <i>Choco lava cake with roasted milk crumble, dried apple chip and vanilla ice cream</i> | |

